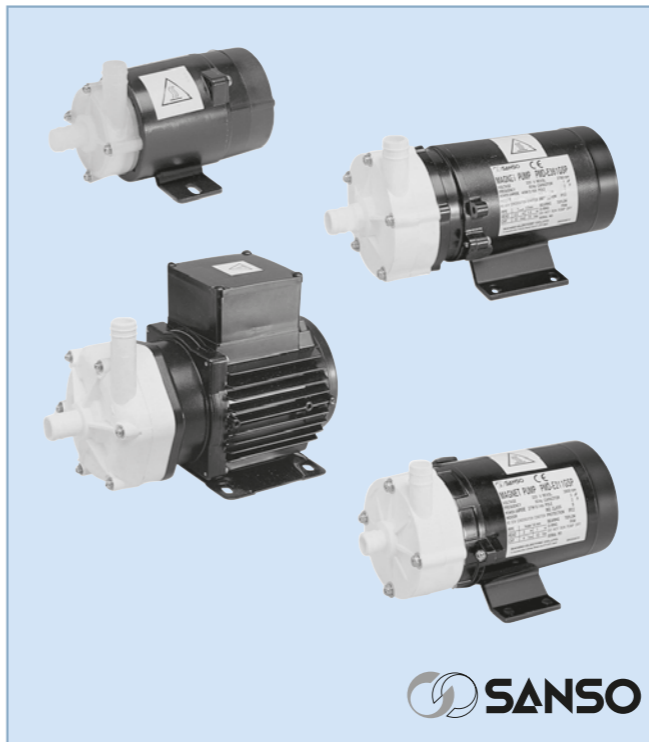


# Magnetic drive centrifugal pumps AC motors

MODEL	VOLTAGE (V AC)	INPUT POWER (W)	FITTINGS		TOTAL HEAD (mt)	FLOW (l/min)	WEIGHT (Kg)	PUMP MATERIAL	LIQUID TEMP (°C)			
			SUCTION	DISCHARGE								
PMD - 0531	230 50/60	18/20	HB 14 mm	HB 14 mm	1,8/2,2	11/13	0,7	PP GF	60			
PMD - 221			TH 3/4"	TH 3/4"								
PMD - 221/11		24/31			TH 1/2"	TH 1/2"	2,6/3,6			15/20		
PMD - 221/12			TH 3/4"	TH 3/4"								
PMD - 371		32/43	HB 17 mm	HB 17 mm	3,1/4,4	25/28	1,7					
PMD - 371/11			TH 3/4"	TH 3/4"								
PMD - 371/12		55/75	TH 1/2"	TH 1/2"	4,1/5,8	39/46	3,4					
PMD - 421			HB 20 mm	HB 20 mm								
PMD - 421/11		105/155	TH 3/4"	TH 3/4"	5,8/8,2	70/80	4,8					
PMD - 641			HB 26 mm	HB 26 mm								
PMD - 641/11		160/230	TH 1"	TH 1"	6,5/9,5	82/94	5,4					
PMD - 1561			HB 26 mm	HB 26 mm								
PMD - 1561/11		220/240	230	TH 1"	TH 1"	13,5/18,5	50/60			7,5	PPO GF	90
PMD - 1521 - GPG1				HB 20 mm	HB 20 mm							
PMD - 1521 - GPG2	50/60	TH 1"	TH 1"									

PUMP MATERIAL		
Pump casing	HB	Hose barbed
	TH	Threaded
Pump materials	PPO GF	Noryl glass filled
	PP GF	Polypropilene glass filled



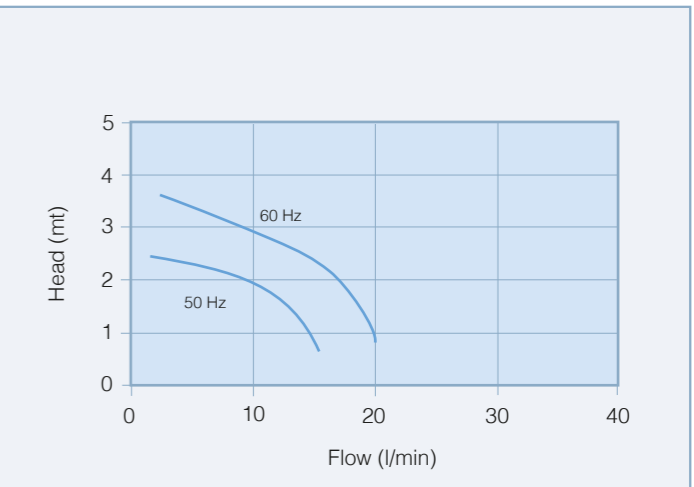
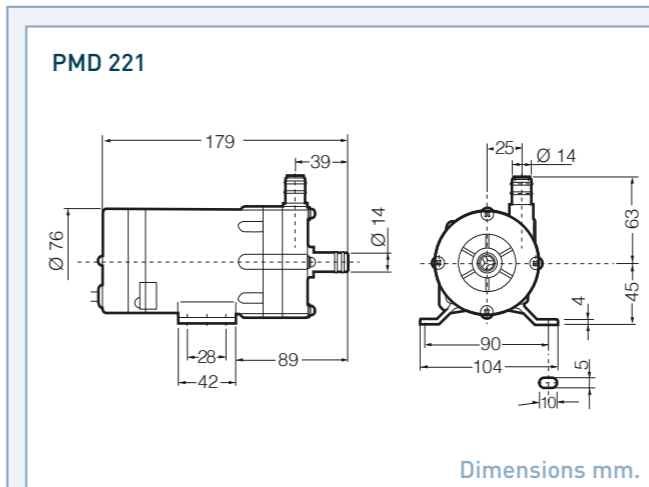
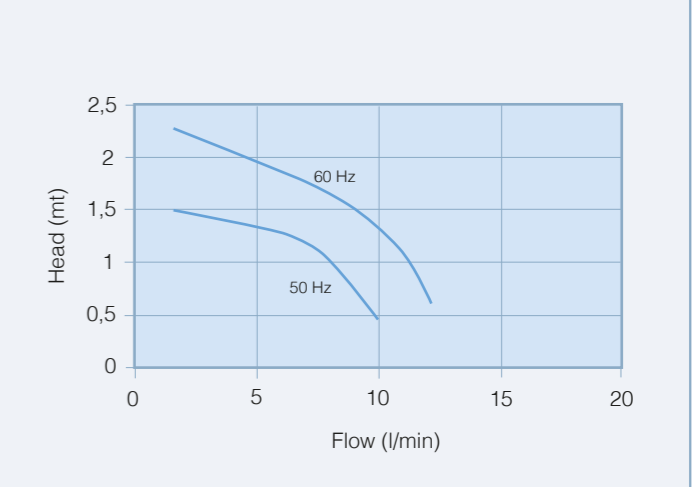
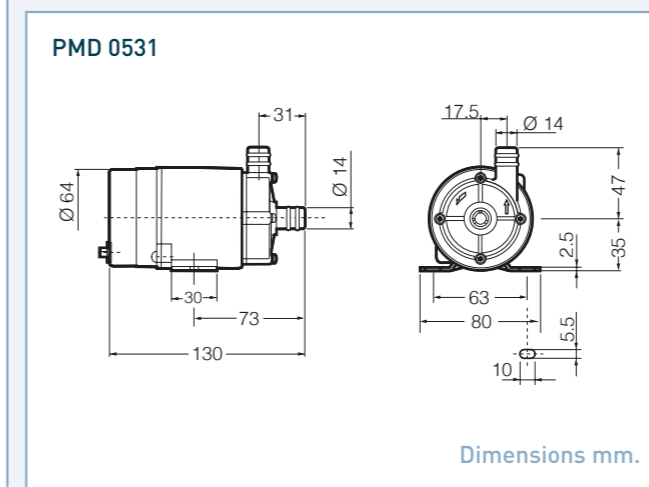
The magnetic drive centrifugal pumps PMD series, made by the Japanese company **SANSO**, are plastic moulded pumps. Due to the updated design and manufacturing, these pumps are suited for all the application where high reliability at a competitive price is a premium.

**Material of construction:**

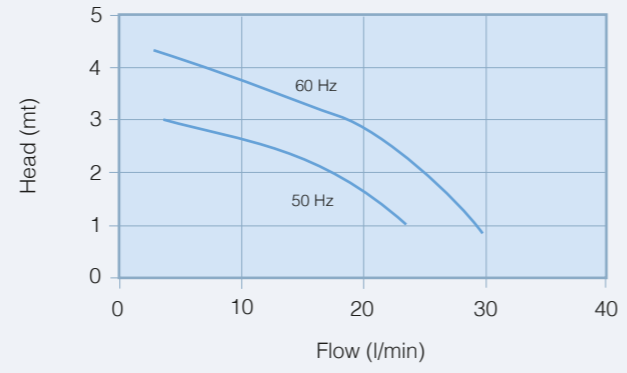
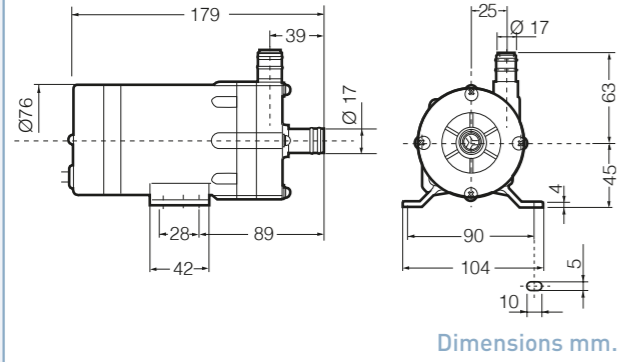
- Pump body, impeller and magnet shroud: PP glass filled
- Pump shaft and thrust bearing gearing: high purity alumina ceramic 98%
- Shaft bearing: PTFE, graphite
- "O" ring: Viton

**Working limits:**

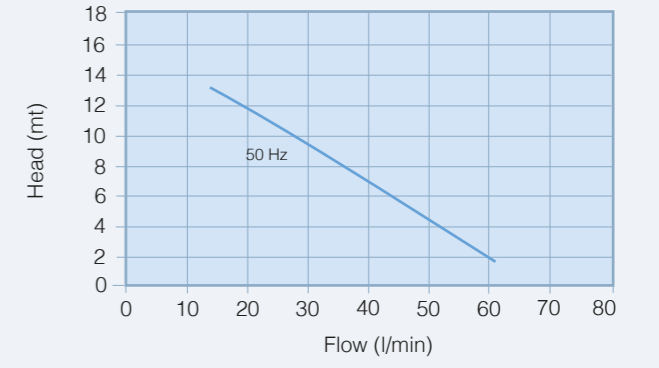
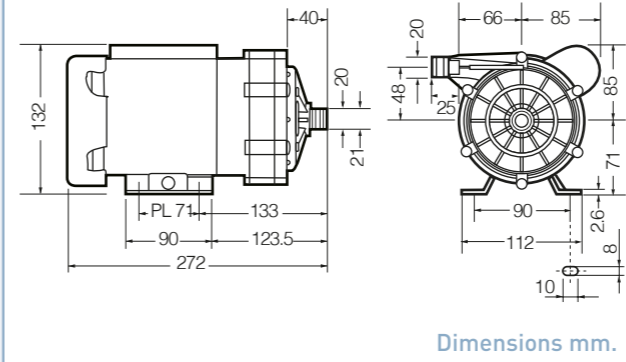
- Temperature: -20° +60° C
- Specific gravity: 1.2 kg/dm<sup>3</sup> max
- Room temperature: 40°C max



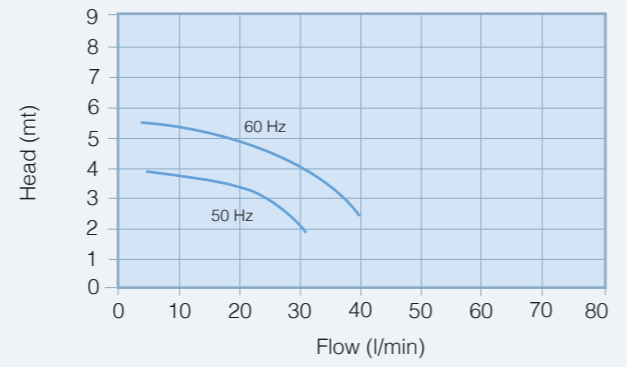
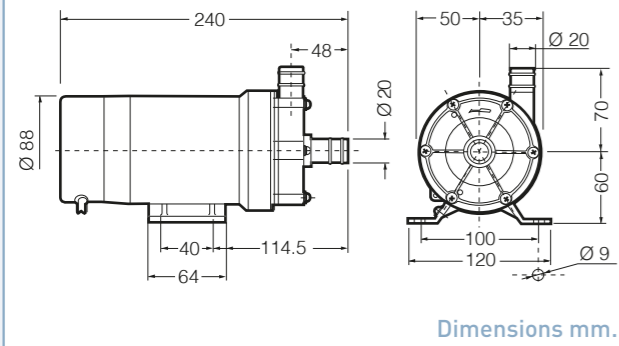
**PMD 371**



**PMD 1521**



**PMD 421**



**PMD 641 - PMD 1561**

